

OKLAHOMA DEPARTMENT OF TRANSPORTATION						
FED. ROAD DIST. NO.	STATE	PROJ. NO.	FISCAL YEAR	SHEET NO.	TOTAL SHEETS	
	OKLA.					
DESCRIPTION			REVISIONS		DATE	

SECTION CORNER - O.D.O.T. D-22-356  
 FOUND AND ACCEPTED A #3 BAR USING OKLAHOMA CERTIFIED CORNER RECORDS FILED IN 2010, 2002, AND 1985. SOME OF THE REFERENCE MONUMENTS WERE ALSO FOUND AND VERIFIED.

SECTION CORNER - O.D.O.T. D-22-458  
 FOUND AND ACCEPTED A #4 BAR WITH CAP STAMPED "1737 OK" USING OKLAHOMA CERTIFIED CORNER RECORD FILED IN 2010. THE REFERENCE MONUMENTS WERE ALSO FOUND AND VERIFIED. COULD NOT FIND THE MONUMENT OR ITS REFERENCES FOR THE OKLAHOMA CERTIFIED CORNER RECORD FILED IN 1985.

SECTION CORNER - O.D.O.T. D-22-459  
 SET A #4 BAR WITH "CA 2054" CAP USING REFERENCES IN THE OKLAHOMA CERTIFIED CORNER RECORDS FILED IN 2010 AND 2002

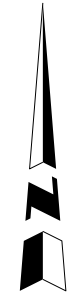
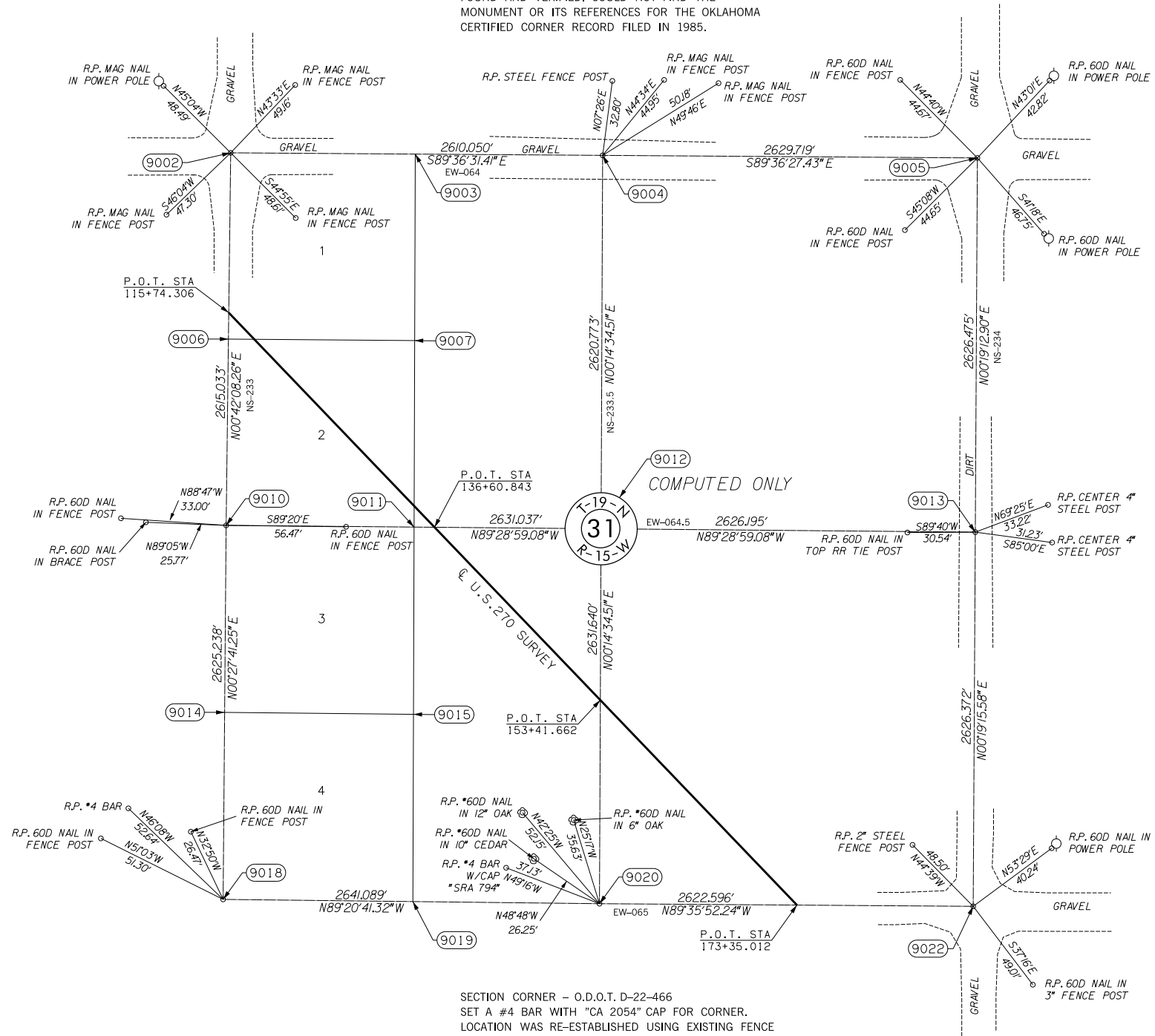
SECTION CORNER - O.D.O.T. D-22-461  
 SET A #4 BAR WITH "CA 2054" CAP FOR CORNER. RE-ESTABLISHED LOCATION BY USING EXISTING HIGHWAY PLANS AND LOCAL IMPROVEMENTS. LOCATION APPEARS TO BE IN HARMONY WITH SURROUNDING IMPROVEMENTS. NO OKLAHOMA CERTIFIED CORNER RECORD WAS ON FILE FOR THIS LOCATION.

SECTION CORNER - O.D.O.T. D-22-462  
 FOUND AND ACCEPTED A #4 BAR SET IN LINE WITH FENCE LINES RUNNING EAST AND WEST. NO OKLAHOMA CERTIFIED CORNER RECORDS WERE FILED FOR THIS LOCATION.

SECTION CORNER - O.D.O.T. D-22-465  
 SET A #4 BAR WITH "CA 2054" CAP FOR CORNER. LOCATION WAS RE-ESTABLISHED USING EXISTING IMPROVEMENTS IN THE AREA AND COMPARING TO GLO NOTES AND DISTANCES. NO OKLAHOMA CERTIFIED CORNER RECORD WAS ON FILE FOR THIS LOCATION.

SECTION CORNER - O.D.O.T. D-22-466  
 SET A #4 BAR WITH "CA 2054" CAP FOR CORNER. LOCATION WAS RE-ESTABLISHED USING EXISTING FENCE LINES RUNNING EAST, WEST, NORTH, AND SOUTH. ALSO USED EXISTING HIGHWAY PLANS. ALSO FOUND A #4 BAR WITH "SRA 794" CAP AT A POINT BEING EQUIDISTANT AND ONLINE WITH OPPOSING SECTION CORNERS. DID NOT ACCEPT THIS LOCATION BECAUSE OF THE METHOD USED TO SET IT AND IT DID NOT FIT SURROUNDING IMPROVEMENTS. NO OKLAHOMA CERTIFIED CORNER RECORD WAS ON FILE FOR THIS LOCATION.

SECTION CORNER - O.D.O.T. D-22-467  
 FOUND AND ACCEPTED A #4 BAR. LOCATION IS IN AGREEMENT WITH OKLAHOMA CERTIFIED CORNER RECORD FILED IN 2010, 1996, AND 1979. THE REFERENCE MONUMENTS WERE FOUND AND VERIFIED.



SCALE:  
1" = 500'

NOTE: REFERENCE'S SHOWN ARE NOT TO SCALE.

OKLAHOMA DEPARTMENT OF TRANSPORTATION SURVEY DIVISION			
PLS	KH		
DRAWN	CF,SK		
CHECKED	KH		
APPROVED	KH		
CREW	JH,SA,BH,DR	SWO 4600 (1)	PROJECT NO. 17671(34) SHEET NO. S29